



Safe Haven Farms
A Community of Choice



Summer 2023
NEWSLETTER



THE SAFE HAVEN WAY



»» FOCUSED ON THE FUTURE

In 2009 a group of parents turned a dream into reality when our beautiful property in Madison Township was purchased and Safe Haven Farms was born. This parent group first started meeting in 2005 to create the vision of a farm community to serve the needs of adults with autism in Southwest Ohio. Because of the nature of their disability, many—including the founders' own sons and daughters—were living isolated and lonely lives, some in group homes in urban areas, with day programs inadequate to deal with their sensory, behavioral, communication and social challenges. So, these determined folks set out to change that! This dream from the beginning was to create “A Community of Choice” that truly enhanced the quality of their lives. A community where individuals significantly affected by autism and other developmental disabilities could have friends, meaningful work, and a healthy lifestyle. Where they could participate in a wide variety of experiences in nearby towns and on the farm with families and friends, attend social events that welcomed them, be surrounded by people who valued and understood them, in a safe environment that met their individual needs. Where they could enjoy the calming presence of animals, gardening, and enjoy a quiet walk in the woods.

Fast forward to 2023 and Safe Haven Farms is still providing that loving “community of choice” for our residents, daytime program, and therapeutic riding participants. As the years have passed and our programs grow, we find that our beautiful farm requires some necessary improvements to address the need for improved health, fitness, and safety. With ageing facilities including HVAC and septic systems, deteriorating paved surfaces, drainage issues in our animal pastures, and ground maintenance, the need for funding to address these expenditures has increased exponentially. Will you give to keep the dream alive and focused on the future? See page 3 for the many ways to give and help reach our donor match goal for Summer 2023.

THANK YOU!
Janie Cochran
Executive Director

SHARE THE LOVE 2023

The 9th Annual Share the Love event benefiting Safe Haven Farms was hosted once again at Stone Creek Dining, Montgomery. Our always popular fundraising dinner featured award-winning entrees, mouth-watering desserts, and extraordinary raffle items!

The popularity of our evening raffle continues to grow! Congratulations to all the winners. Sandy Wier and her family will spend "Autumn in the Rockies" staying at a condo in Estes Park, Ann Ullman and Mike Stibich will experience dining in and around Greater Cincinnati as winners of our Dinner's Delight packages, and Trena Goodwin is all set to enjoy her Queen City Getaway Weekend which includes lodging, dinner at Ruth Chris, a show at Music Hall/Aronoff, a \$500 Visa card, and more!

Safe Haven Farms extends deep appreciation to our loyal sponsors and diners for their continuing support each year. We love seeing so many familiar faces and those who bring new friends to experience Share the Love. We are especially grateful to the staff and management of Stone Creek Montgomery who worked throughout the evening with such dedication and great service. We look forward to returning next year for another delicious event!



Share the Love Dinner Event
Benefiting Safe Haven Farms

Entree Sponsor
Impact Autism Foundation

Media Sponsor
REACH Magazine/Prestigious Living

Dessert Level Sponsors
McCloy Family Foundation
Blevins Financial
Philip & Sheila Cohen

Cocktail Level Sponsors
Truepoint Wealth Counsel
First Financial Bank
Miami Valley Gaming

Raffle Level Sponsors
Bricker Graydon LLP
Todd & Karen Spidare
Warren Co ESC

Sweetheart Sponsors
• Choices in Community Living • The Knolls of Oxford
• Fey Bruder Insurance • Butler Rural Electric Cooperative
• Insurance Associates of Middletown

 **STONECREEK**
— DINING COMPANY —



FOCUSED ON GIVING



Summer Donor Match

Every donation made before August 31st will be doubled due to the generosity of an anonymous donor.

Our goal for summer 2023 is **\$25,000** which will be doubled to **\$50,000** with the donor match!

Daily life at Safe Haven Farms is filled with numerous activities: morning walks, animal care, working in the gardens, swimming, riding bikes/trikes, nature hikes, plus art and music programs. Our farmers live, work, and play at SHF.

For the past 13 years these activities, intense weather, and the passage of time have made it evident that our facilities and grounds need some serious attention to safely support all programs at SHF. Below are a few photos of areas that urgently need improvement - path and roadways resurfacing, building repairs & upkeep, property maintenance, and costly replacement of aging HVAC and septic systems.

YOUR CONTRIBUTION WILL HELP US BUILD UPON THE SUCCESSES OF TODAY TO SHAPE A BETTER FUTURE FOR TOMORROW.



Use the enclosed envelope to mail donations to:

Safe Haven Farms

PO Box 62034

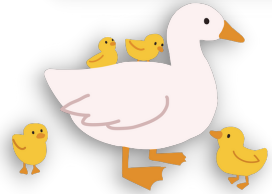
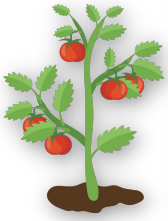
Cincinnati, OH 45262

or go to www.safehavenfarms.org/donate



Together we can make a difference!

FOCUSED ON OUR FARMERS

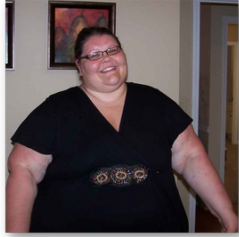


FOCUSED ON CARE.....FOCUSED ON SERVICE

THE FAB 5



Jody Jewel



Stephanie Dunaway



Jean Smith



Rose Cumpton



Mike Rogers

Safe Haven Farms like many other programs serving adults with disabilities would not be able to carry out our mission without our wonderful Direct Support Professionals. These everyday warriors are like trusted family members; there for our folks during the happy moments and the difficult ones. They will take someone out for their favorite meal or ice cream treat, sing a song to provide comfort, read a story, play a game, assist with phone calls to a beloved family member, cook meals, clean the house, stay ahead of seemingly endless loads of laundry, and the list goes on. During the pandemic we called them "OUR HEROES" and they still are today.

Stephanie, Jean, and Rose have held different roles over the years, but their main focus has been service in the residences - day, evening, weekends, and holidays - truly our devoted unsung heroes. **Jody**, our day services program manager, knew some of our "farmers" before Safe Haven even opened our doors and to this day still spends many hours assisting with residential care when they are short staffed. **Mike** leads our horticulture program and works with the farmers as part of their day program activities and proves there is no shame in getting your hands dirty every day.

We pay special tribute to the "**fabulous five**" who have served Safe Haven Farms since the very first day of operation in 2010. These folks and so many other direct support professionals who have worked at SHF, are valued, appreciated, and so loved by our farmers and their families.

Fearless Leader - Stacy Roberts



Stacy arrived at Safe Haven Farms in 2013 when Bittersweet Farms became SHF's second direct care provider. She made the move from Northern Ohio and has happily remained at SHF even after our care provider partnership changed to Choices in Community Living in 2017. Stacy serves as Choices Deputy Director/Residential Services Program Manager at Safe Haven Farms and works tirelessly, sometimes a double shift, to ensure quality care and service for our farmers.

Music Therapist - Laura Baggette

"Music is medicine for the mind."

Laura Baggette has served as Safe Haven Farm's music therapist for many years. Laura visits the farm once a week and provides group and individual sessions to both residential and day program participants. She exudes happiness and enthusiasm and makes the most timid musician feel at home in our Hatton Center music room. She is creative and connects well with each student. Joy at Safe Haven "crescendos" when it's music Thursday with Laura.



FOCUSED ON VOLUNTEERS

GE VOLUNTEERS SAVE THE DAY!

Recently Safe Haven Farms was thrilled to have not one volunteer team from GE Aerospace visit our farm, but two volunteer teams. During the months of April and May volunteers from GE Aerospace, Evendale, worked on various projects around our farm. These volunteers planted shrubs & a memorial tree, mulched, trimmed existing shrubs, cleared out weeds, built a fence, worked on our raised garden beds, and assisted our horticulture lead with one of our hoop houses. These hardworking helpers endured pouring down rain, a short thunderstorm, afternoon heat, and even a few scary spiders. We cannot thank them enough for giving our farm a much-needed spring makeover. Thank you, GE associates, Joseph Sprauer and Mitchell Ferguson, for leading the teams and the timely communication in making these visits a wonderful success!



GE Aerospace

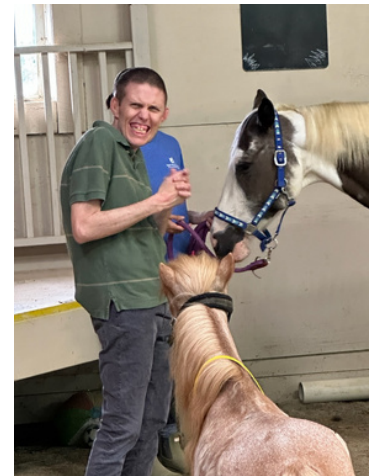
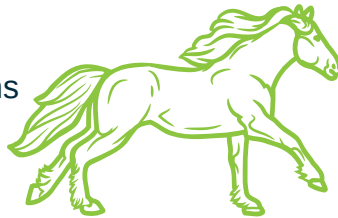


FOCUSED ON COMMUNITY

Adaptive riding and equine assisted activities are in full swing at Safe Haven Farms. Under the direction of Kathy Corbett, PATH certified instructor, we are "galloping" forward with new activities and creative plans to grow our program to serve more individuals. Assisted by Tracey Bridges, Animal Care Coordinator, devoted volunteers, and Choices day program staff, Fridays are now "Fundays" at Safe Haven Farms.

This wonderful program is made possible by several generous donors. A very special **THANK YOU** to the following key supporters:

Middletown Community Foundation
Helen Andrews Foundation
Sutphin Family Foundation
Moose Lodge #501 Middletown
Elks Lodge #257 Middletown
Butler Rural Community Connections



Sign up for Kroger's Community Rewards program!!

By linking your Kroger Plus customer card to benefit SHF, you will help us earn rewards from Kroger. First time users need to set up an account at www.kroger.com: click on the register button in the upper right-hand corner and follow the prompts to create an account. Use your email and password to log in and select your community rewards partner in the Account Settings. **Enter KA609** or Safe Haven Farms in the search box; confirm your selection and select Save. Next time you shop at Kroger's check the bottom of the receipt to confirm that you have selected Safe Haven Farms as the non-profit you choose to support.





Safe Haven Farms

A Community of Choice

MAILING ADDRESS:
P.O. BOX 62034
CINCINNATI, OH 45262

STREET ADDRESS:
5970 NO MANS ROAD
MIDDLETOWN, OH 45042

WWW.SAFEHAVENFARMS.ORG

Your contributions bring programs to life at Safe Haven Farms!

