



The Safe Haven Way Holiday 2023

SEASON'S GREETINGS



Holiday Greetings Families, Friends, and Community Partners!

For more than 13 years Safe Haven Farms has been serving adults with developmental disabilities through our residential and day service programs. Safe Haven Farms would not exist without our loving direct care staff and generous donors who support our mission to provide a community of choice and meaningful purpose every day at Safe Haven.

With each passing year the need continues to grow for appropriate program opportunities for adults with developmental disabilities. Safe Haven Farms addresses that need with a variety of program options designed to welcome, value, and enrich the lives of those we serve. Safe Haven Farms is more than a farm – we are a loving family to the residents and day program attendees, their parents/guardians, and our wonderful onsite care givers. We have remained true to our mission and look towards 2024 with enthusiasm.

In 2024 we will focus on expanding our day services and therapeutic equine/animal care activities. This growth will be fueled by a need for increased financial resources and dedicated volunteers who share our vision for serving individuals with disabilities. This program expansion is a greater opportunity to connect with our local and Southwest Ohio community. Look for more volunteer opportunities both individual and group to be made available. Community days at Safe Haven will be added to the Spring/Summer calendar where guests will be welcomed to tour our farm, children/adults can participate in some fun farm activities, and everyone can learn more about green energy by visiting our recently completed solar array.

Your gift this season will provide a significant impact on our ability to make 2024 a year of positive change and growth. Please know that we are deeply appreciative of your time in considering a year-end donation to Safe Haven Farms. Adults and children with developmental disabilities desperately need our compassion, our support, and our voices. With your help, we can continue to make a difference for more adults and children in need.

Sincerely,

Janie Rattman
Executive Director, Safe Haven Farms





Spotlight on Community Support



**Middletown
Community
Foundation**

The **Middletown Community Foundation** represents the heart of the greater Middletown community providing vital funds to area nonprofits and other civic projects. Safe Haven Farms is extremely grateful to the foundation for their recent grant award of \$5,000 to support our horticulture program in 2024. It is our hope to expand our Community Supported Agriculture Program and our Spring plant sale to serve a greater number of individuals.

At Safe Haven Farms we are honored when local businesses reach out to learn more about our farm and the programming we provide to adults and children with developmental disabilities. **Meijer of Middletown** is one of those great community-minded businesses that stopped in for an insightful tour of Safe Haven Farms. We are thrilled to announce that Meijer of Middletown awarded Safe Haven Farms a \$10,000 grant to support our program needs and other future farm projects. Thank you, Meijer and the local Meijer Associates, who made this possible.

meijer



LODGE 501

**MIDDLETOWN, OHIO
CHAPTER 183**

Safe Haven Farms would not be able to carry out our mission if not for wonderful local supporters like **Moose Lodge 501 of Middletown**. Thanks to their continued generosity, Safe Haven Farms was able to repair the damaged pavement at our farm, purchase and install a new swimming pool liner, build a safe structure for our Pyrenees puppies, and make other numerous improvements around the farm. THANK YOU, Moose Lodge 501 members for supporting our mission at Safe Haven Farms over the past 2 years! You are an amazing organization that loves their local community.

Community support runs deep here in Madison Township, Ohio and no one knows it better than **Western Hills Veterinary Clinic**. Dr. Burk and her devoted staff provide great care for our furry and feathered friends. They also never miss a chance to sponsor our annual "Walk On" for Safe Haven Farms. The success of our fall walk would not have been possible without their loyal support. This year's event raised **\$12,874**. Thank you to all who participated and donated to support our farm and our team competition. Team **Bee Keeper** rose to the top, raising **\$7,234** for program needs.



**Western Hills
Veterinary Clinic**



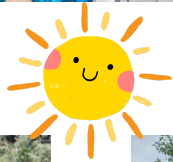
Since the official opening of Safe Haven Farms in 2010, we have envisioned having solar to supply our energy needs. Now 13 years later, our vision has come full circle. Thanks to the generous support of **All Points North Foundation**, Safe Haven Farms has been able to add the final phase to our solar array. This phase will add 25.4 kW to our current 69 kW PV-DC system. Moving forward Safe Haven Farms is on track to save an additional 12% on our monthly electric bills with a total annual savings of close to 38%. These savings will allow us to focus more funding on vital farm programs and much needed farm improvements to support adults with developmental disabilities. We appreciate the continued partnership with those who made this milestone possible, All Points North Foundation, Kokosing Solar, and Butler Rural Electric Cooperative.

Good Times

Remembering

Working Hard

2023



New Friends

Madison & Tallawanda Students

Thank You Sheldon, Mei, & Don
for our Bike Bungalow

Clowning Around



Boone & Brody



MAILING ADDRESS:
P.O. BOX 62034
CINCINNATI, OH 45262

STREET ADDRESS:
5970 NO MANS ROAD
MIDDLETOWN, OH 45042

WWW.SAFEHAVENFARMS.ORG



**** Meet Patrick ****

Patrick O'Lenick has lived at Safe Haven Farms since that first summer in 2010. He was welcomed to the farm by his friend and SHF staff member, Jody, who began working with Patrick when they were both a mere 18 years old – 36 years total in 2023.

Pat has a close and loving relationship with his parents and loves to visit them on the weekends, but always looks forward to coming back to his home at SHF. He enjoys watching his favorite television shows - westerns, classic tv, spiderman and other action hero movies. Pat knows how to appreciate great music, especially rock n' roll, immersing himself in some good ZZ Top tunes – the louder the better. Around the farm Pat assists with animal care, garden prep work, and loves recycling cans, taking great pride in his work. The Christmas season brings so much joy to Pat – he loves the music, the lights, decorated trees, and holiday movies.

Pat will be one of the first of our folks to greet a friend or new visitor to the farm with his “warm-hearted” personality, infectious smile, and great sense of humor. When Patrick smiles, it just has a magical effect on you. Like his good friend and caregiver Jody has shared – we are all grateful for our friendship with Patrick. His presence makes Safe Haven Farms a very special place.



Jody & Patrick sharing a laugh.

